



**BOSTON WATER & SEWER COMMISSION**  
**REHABILITATION OF THE NEW BOSTON MAIN INTERCEPTOR**  
**Contract No. 21-309-005A**  
*Report for December 1, 2023 through January 5, 2024*

## PROJECT SUMMARY

The New Boston Main Interceptor (NBMI) is a critical part of the BWSC's wastewater system, carrying sewage and stormwater from more than 3,000 acres in City neighborhoods. Due to severe degradation, the NBMI system needs to be rehabilitated. The goal of this Phase I project was to rehabilitate a 500-foot portion of the existing 102-inch NBMI and four major sewer structures.

## PROJECT UPDATE: PROJECT COMPLETION

We are pleased to report that the major work for Phase I of the NBMI Rehabilitation is complete! Final touchups on striping will be finished in the coming weeks. Thank you for your patience as the BWSC completed this essential project to ensure reliability of sewer and stormwater services throughout such a large portion of Boston. Work included:

- **Special Manhole B – Moakley Park** – reconfigured a 24-inch pipe to reduce turbulence and associated corrosion/odor; installed new platform for safe maintenance.
- **Special Manhole C – Dorchester Ave** – rehabilitated chamber surfaces; installed new walkways and ladders for safe maintenance; added two new stop log systems to control flows; rehabilitated 36" pipe conveying flows between Manhole C and Manhole D.
- **Special Manhole D – Preble Street** – rehabilitated chamber surfaces; installed new walkways and ladders for safe maintenance; reconfigured connection for the 36-inch pipe from Manhole C to reduce turbulence and associated corrosion/odor; identified and addressed a local sewer that was not functioning properly by installing a new connection to Manhole D.
- **Special Manhole E – Southamton Street** – rehabilitated chamber surfaces; installed new walkways and ladders for safe maintenance; replaced three stop log systems to control flows.
- **102-inch NBMI – Preble Street** – sliplined more than 500 feet of large pipe to avoid excavating the entire length of the road.

Phase II of rehabilitating the NBMI system is now proceeding, with most work occurring in Moakley Park.

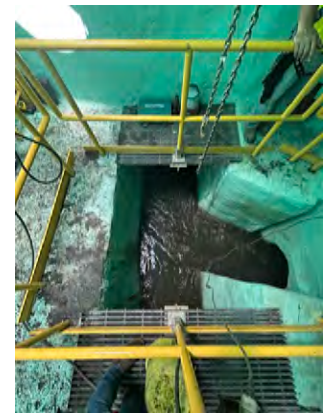
## PHOTOS OF WORK COMPLETION



*Location Map*



*New platform,  
Special Manhole B.*



*Completed rehabilitation,  
Special Manhole C.*



*Before and After Rehabilitation, Special Manhole D.*



*102-Inch New Boston Main Interceptor, Before and After Rehabilitation.*



*Completed rehabilitation, Special Manhole E.*