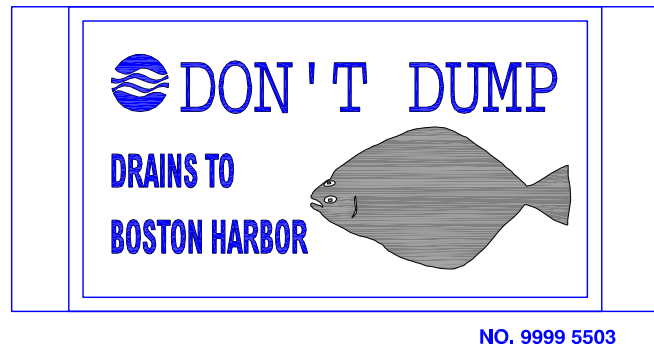
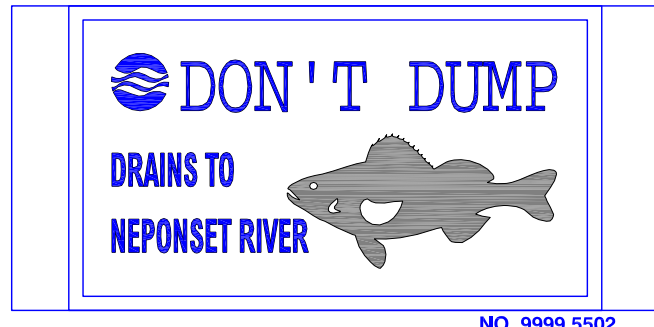
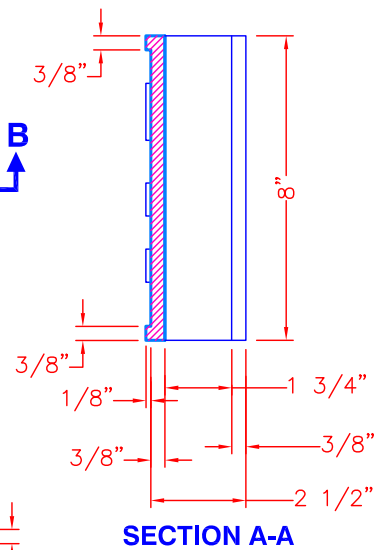
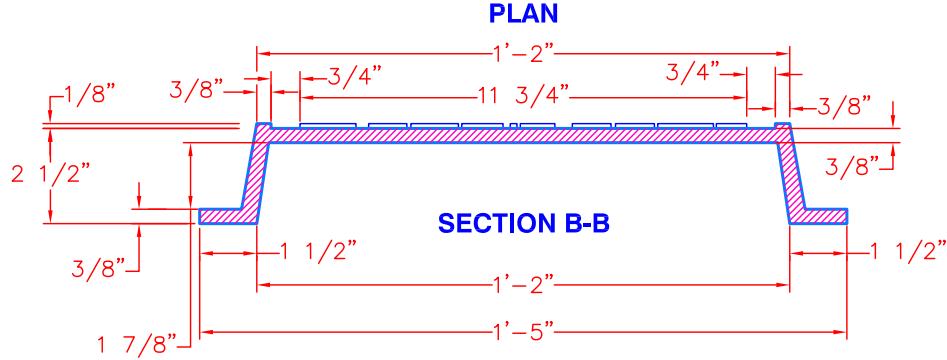
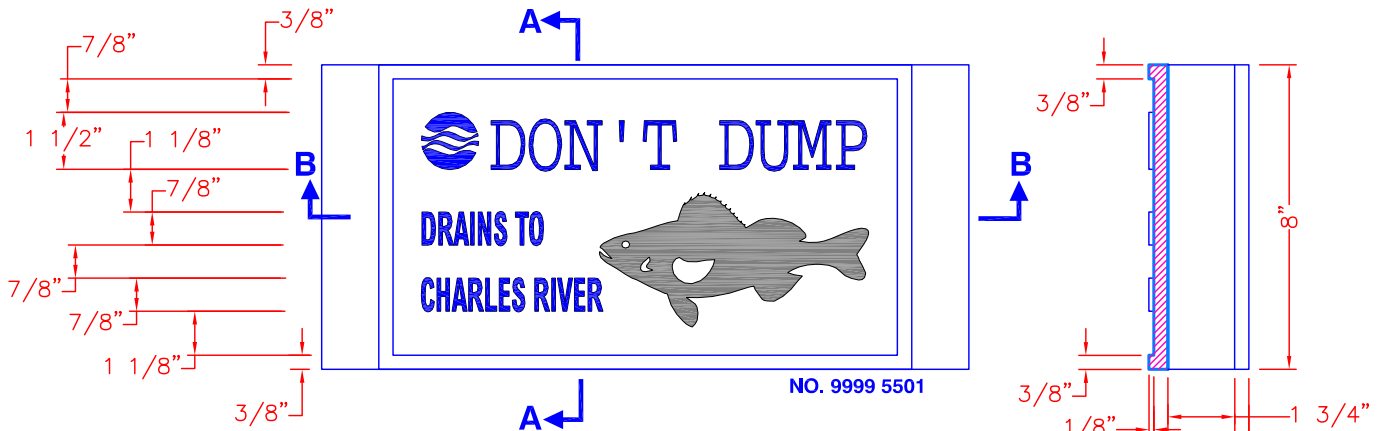


NOTE:
 ALL CASTINGS SHALL BE
 MANUFACTURED FROM GRAY IRON
 CONFORMING TO ASTM A48 CLASS 35B
 AND/OR AASHTO M105 CLASS 35B.



Location: Z:\eng\ACAD_S\TD\Technical Details\F - Castings\F1-D23A - 8x14 Catch Basin Sign.dwg
 Plotted on: Monday, June 10, 2019 - 10:26 AM by Donohoe, William



Boston Water and Sewer Commission
 980 HARRISON AVE., BOSTON, MA 02119
 (617) 989-7000 www.bwsc.org

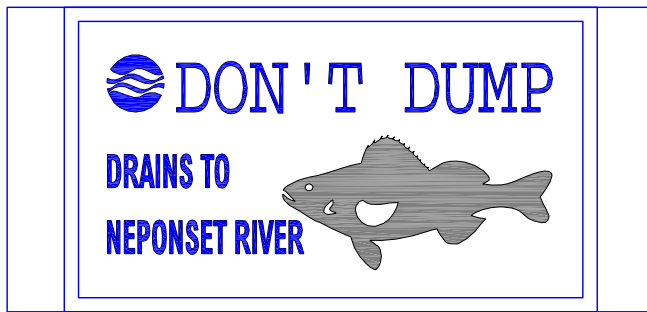
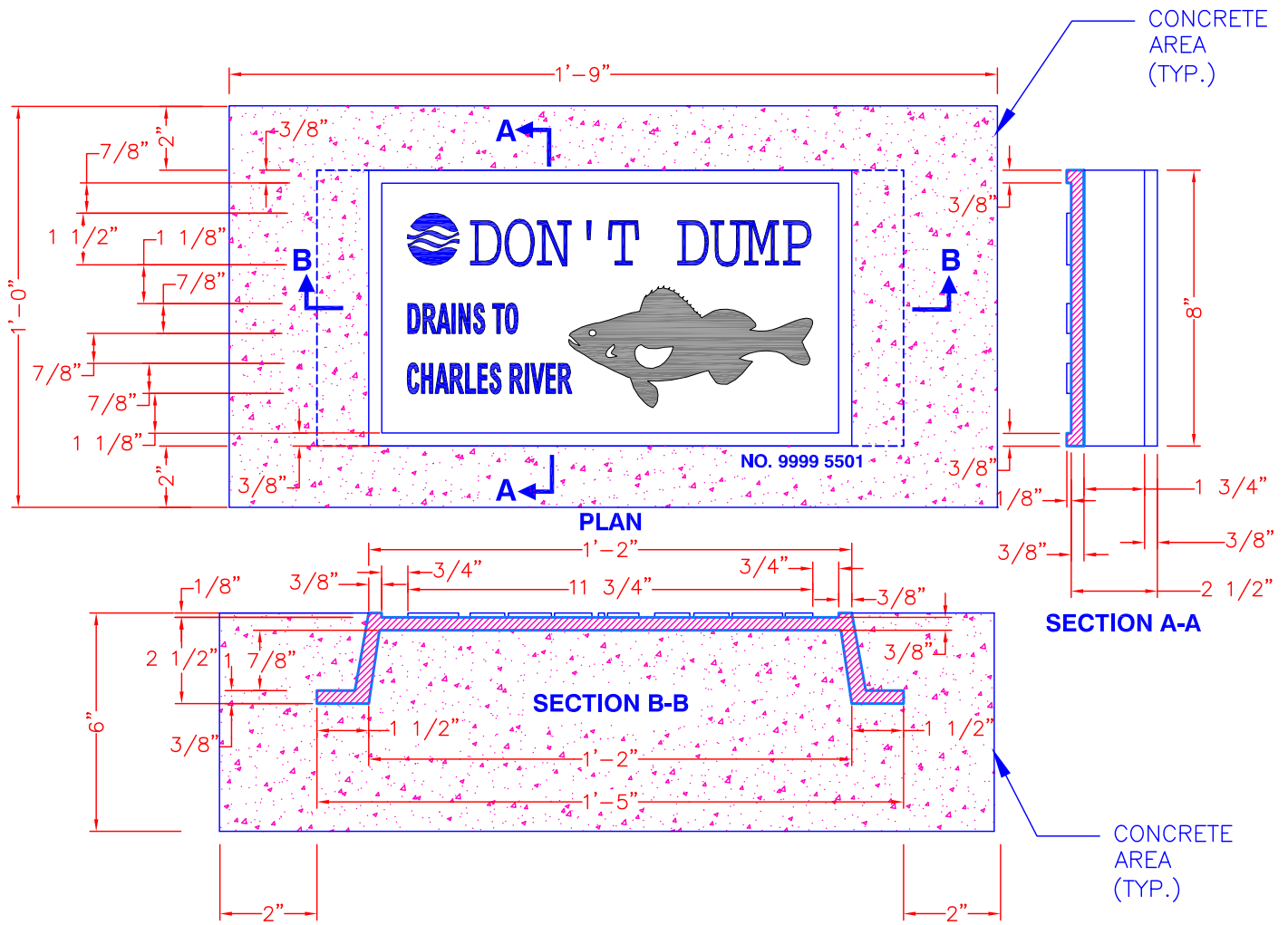
8X14 CATCH BASIN SIGN

Scale: Not To Scale

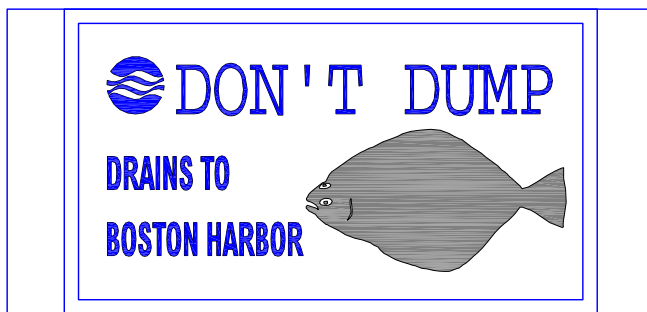
DATE:
 JAN 17, 2014

DETAIL NO.
F1-D23a

Location:Filename: Z:\eng\ACAD_S\TD\Technical Details\F - Castings\F1-D23B - 8x14 Catch Basin Sign for Non-Concrete Areas.dwg
 Plotted on: Monday, June 3, 2019 - 10:57 AM by Donohoe, William



NO. 9999 5502



NO. 9999 5503

NOTE:
 ALL CASTINGS SHALL BE
 MANUFACTURED FROM GRAY IRON
 CONFORMING TO ASTM A48 CLASS 35B
 AND/OR AASHTO M105 CLASS 35B.



**Boston Water and
 Sewer Commission**

980 HARRISON AVE., BOSTON, MA 02119
 (617) 989-7000 www.bwsc.org

**8X14 CATCH BASIN SIGN FOR
 NON-CONCRETE AREAS**

Scale: Not To Scale

DATE:
 MAY 30, 2019

DETAIL NO.
F1-D23b