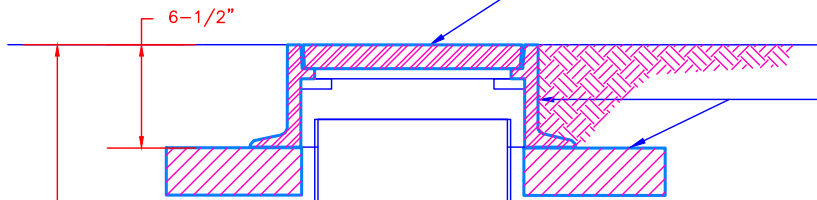


BOSTON WATER AND SEWER COMMISSION  
STANDARD 16"x18" GATE VALVE  
FRAME AND COVER  
SEE DETAILS F1-D21 AND F1-D19



SET CAST IRON FRAME ON A  
CONCRETE OR MASONRY FRAME  
ON COMPACTED FILL

5'-6" TO TOP OF PIPE (TYPICAL)

12"

DUCTILE IRON ACCESS PIPE  
CENTER OVER VALVE BONNET AND  
KEEP PLUMB UNTIL BACKFILLED

PLACE MASONRY BLOCK  
FOUNDATION UNDER ACCESS PIPE  
ON COMPACTED FILL.  
DO NOT REST ON VALVE.

RESILIENT SEATED  
GATE VALVE

BOTTOM OF TRENCH  
UNLESS IN ROCK

BLOCKING FOR VALVE

**NOTE:**

ALL GATE VALVES 8" OR LARGER REQUIRE A  
12" DIAMETER STANDPIPE AND A 16"x18"  
STANDARD BWSC FRAME AND COVER.

Location\Filename: V:\eng\ACAD\_STD\Technical Details\A - Water Details\A-19 - Typical Gate Valve Installation in Trench for Sizes 20-inch and Smaller.dwg  
Plotted on: Friday, November 29, 2013 - 11:10 AM by Donohoe, William



**Boston Water and  
Sewer Commission**  
980 HARRISON AVE., BOSTON, MA 02119  
(617) 989-7000 www.bwsc.org

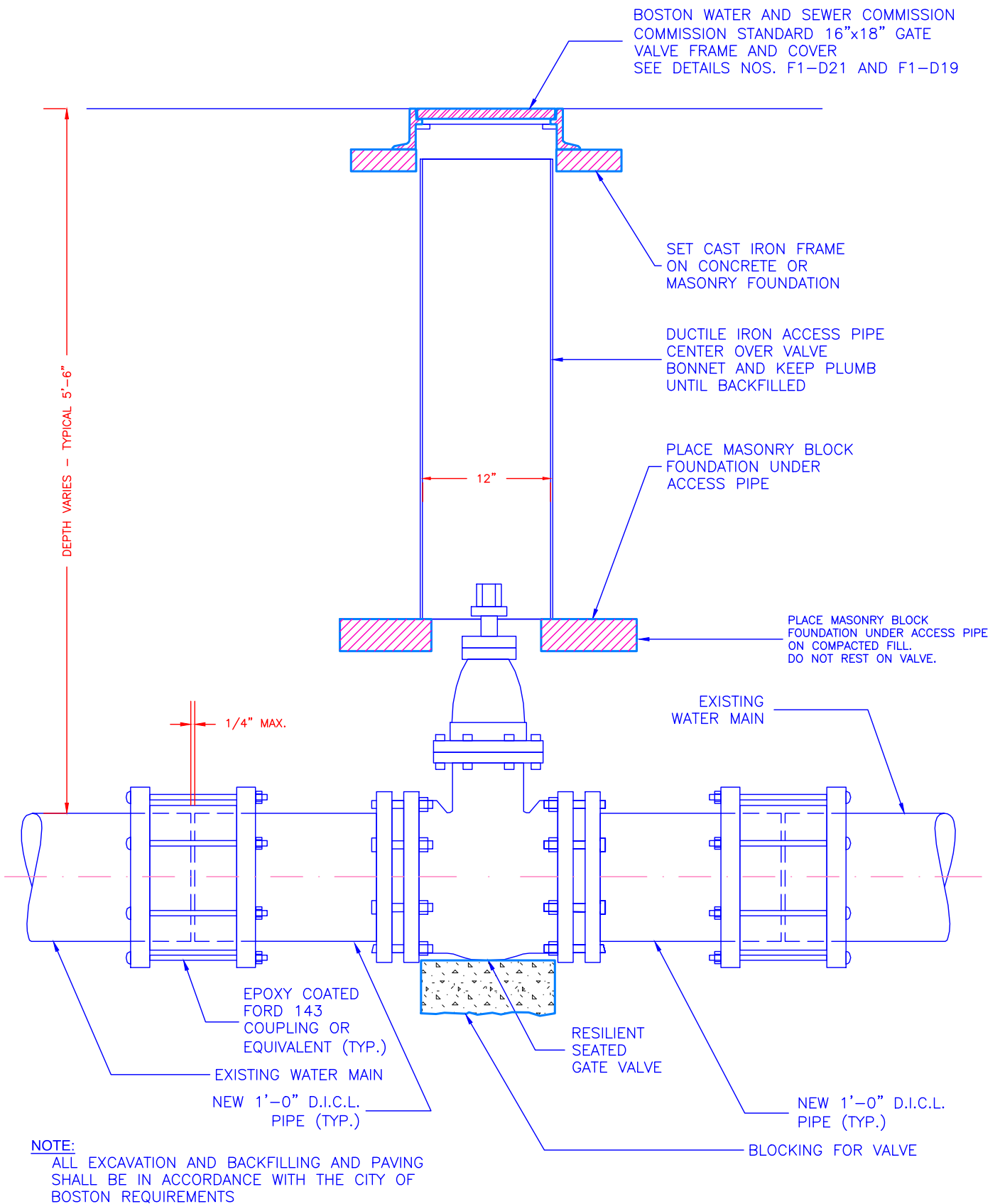
**TYPICAL GATE VALVE INSTALLATION -  
CROSS SECTION VIEW**

Scale: Not To Scale

DATE:  
**Aug. 21, 2013**

DETAIL NO.  
**A-19a**

Location\Filename: V:\eng\ACAD\_STD\Technical Details\A - Water Details\A-19 - Typical Gate Valve Installation in Trench for Sizes 20-inch and Smaller.dwg  
 Plotted on: Friday, November 29, 2013 - 11:10 AM by Donohoe, William



**Boston Water and  
 Sewer Commission**  
 980 HARRISON AVE., BOSTON, MA 02119  
 (617) 989-7000 www.bwsc.org

TYPICAL GATE VALVE INSTALLATION -  
 ELEVATION VIEW

Scale: Not To Scale

DATE:  
 Aug. 21, 2013

DETAIL NO.  
**A-19b**